

**Representing The  
Following  
Manufacturers:**



**12810 Sheffield Curve  
Minnetonka, MN 55305  
(651) 704-9767 Office**

		<p>SERVO DRIVES SERVO CONTROLS POWER SUPPLIES SHUNT REGULATORS</p>
		<p>ROLLER SCREW LINEAR ACTUATORS INTEGRATED MOTOR ACTUATORS INTELLIGENT DRIVE/MOTOR ACTUATORS</p>
		<p>INDUSTRIAL BARCODE SCANNERS LASER MARKING SYSTEMS MACHINE VISION SAFETY LIGHT CURTAINS &amp; AREA SCANNERS INDUSTRIAL SENSORS</p>
		<p>NEXSAFE CERTIFIED SAFETY BRAKES PRECISION LINEAR MOTION PRECISION ROTARY MOTION POWER TRANSMISSION</p>
		<p>1- &amp; 3-PHASE POWER SUPPLIES DC-DC CONVERTERS BATTERY AND CAPACITOR DC UPS REDUNDANCY MODULES IP67 MACHINE-MOUNT POWER SUPPLIES</p>
		<p>CONNECTIVITY FIELDBUS TECHNOLOGY INDUSTRIAL SENSORS INTRINSIC SAFETY PROGRAMMABLE HMI RADIO FREQUENCY ID (RFID)</p>

**OUR OBJECTIVE**

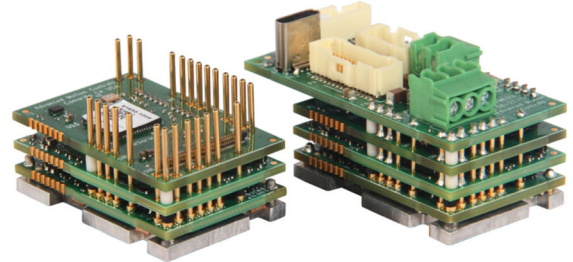
Mtech Inc. is a manufacturer's representative dedicated to providing customers with solutions to their factory and process automation applications. This objective is accomplished through the skills and efforts of our experienced and talented team.

Office	(651) 704-9767	info@mtechmn.com
Brian Bendel	(952) 484-9508	bbendel@mtechmn.com
Brian Freecheck	(612) 889-0008	bfreecheck@mtechmn.com
Ben Halsten	(612) 400-5091	bhalsten@mtechmn.com
Broc Grell	(651) 605-1541	bgrell@mtechmn.com
Eric Lavigne	(612) 382-0819	elavigne@mtechmn.com
Mike Thorson	(612) 239-3322	mthorson@mtechmn.com

# ADVANCED MOTION CONTROLS

[www.a-m-c.com](http://www.a-m-c.com)

## PWM Servo Control



10-800 VDC  
115/230/460 VAC  
Output Up To 250 A

Any Motor  
Any Feedback  
Any Controller  
-50C-100C

EtherNet/IP



EtherCAT

CANopen  
RS-232/485  
Powerlink

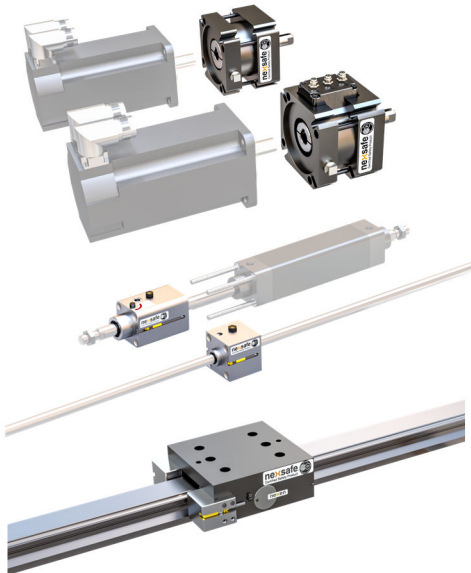
# nexen®

## Linear & Rotary Brake

**nexsafe**  
Certified Safety Products

[www.nexengroup.com](http://www.nexengroup.com)

## Roller Pinion System



## PT Clutch & Brake



## Precision Rotary Indexers

Tritex Intelligent Actuator/  
Motor/Controller

EtherNet/IP



# CURTISS - WRIGHT

FTX & K-Series Universal  
Actuator For Any Motor

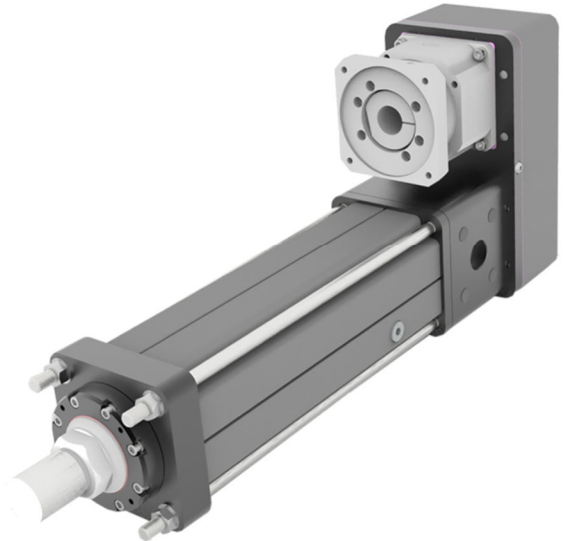
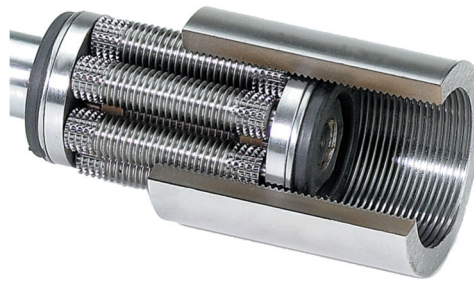
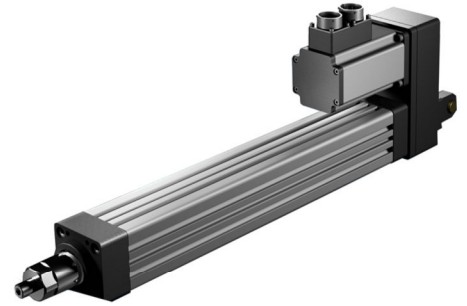
Up to 80,000 lbf

Up to 59.3 inches/sec

## EXLAR®

[www.exlar.com](http://www.exlar.com)

### Linear Actuators



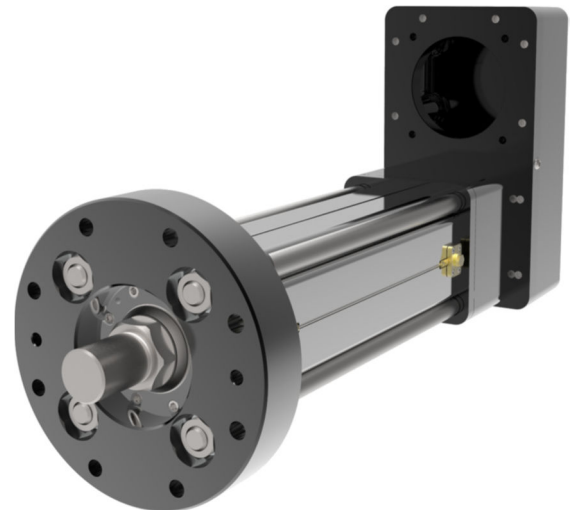
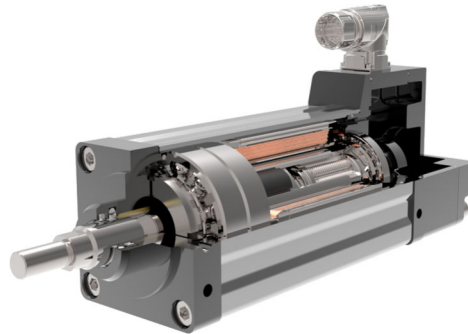
### Hazardous Location Electric Valve Actuation



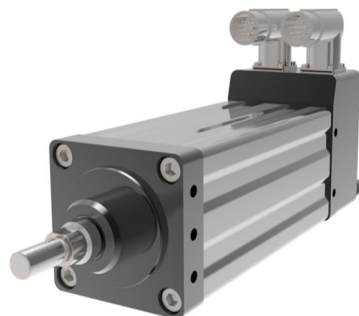
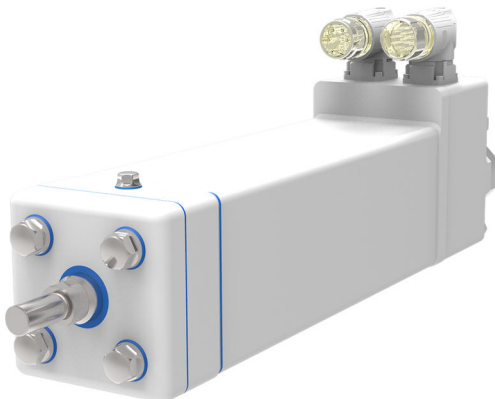
### GSX/GTX Series Integrated Actuator/Motor

Up To 11,500 lbf

Up To 37.5 inches/sec



### Food-Grade Actuators





# DATALOGIC

EMPOWER YOUR VISION

[www.datalogic.com](http://www.datalogic.com)



Stationary Industrial Barcode Scanners

Laser Marking Systems

## DATA SENSING

easing automation challenges

[www.datasensing.com](http://www.datasensing.com)



Industrial Sensing



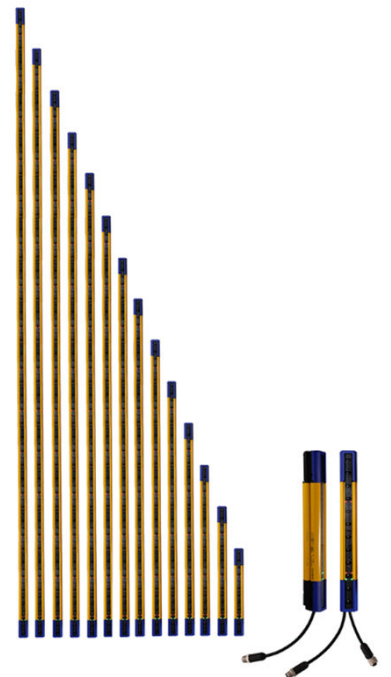
Machine Vision



Safety Sensor



Safety Laser Scanner



Safety Light Curtain

# PULS

[www.pulspower.com/us/home](http://www.pulspower.com/us/home)



**1-Phase (15-960W, 0.5A to 40A)**



**3-Phase (90-960W, 2.5A to 40A)**



**DC Backup Power**



**1-Phase Economy**



**Electronic Circuit Breaker**



**IP67 Field Power Supply  
With IO-Link**

## Performance

5/10/12/15/24/30/36/48/72 VDC Output

Up To 96% Efficiency

-40C-70C Ambient

Integrated Redundancy

## Supplementary Units

DC/DC Converters

Conformal-Coated Supplies

Redundancy Modules

## Additional Approvals

2MOPP Medical

UL C1D2, ATEX, IECEx Hazardous Location

GL Marine

EN50155 Rail

# TURCK

## Connectivity

[www.turck.us/en/productgroup/Connectivity](http://www.turck.us/en/productgroup/Connectivity)



Field-Wired



Patented Torque Sleeve IP69 M12



Signal Consolidation



CAN/Devicenet



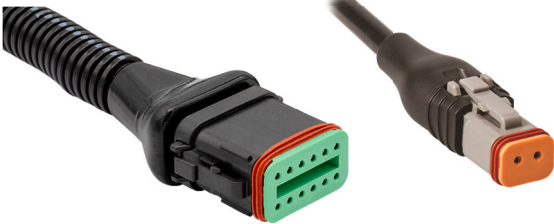
Ethernet



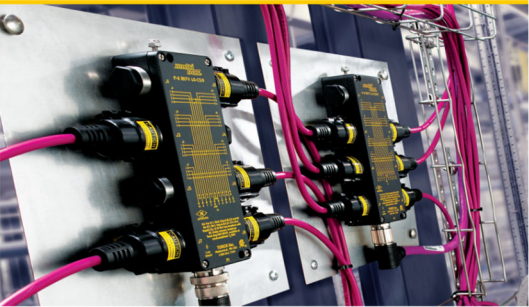
DIN 43650



Deutsch



Hazardous Location Div 2 Connectivity



Powerfast Up To 40 amps, 600 VAC



Molded MS



Reelfast Bulk Cable





# TURCK

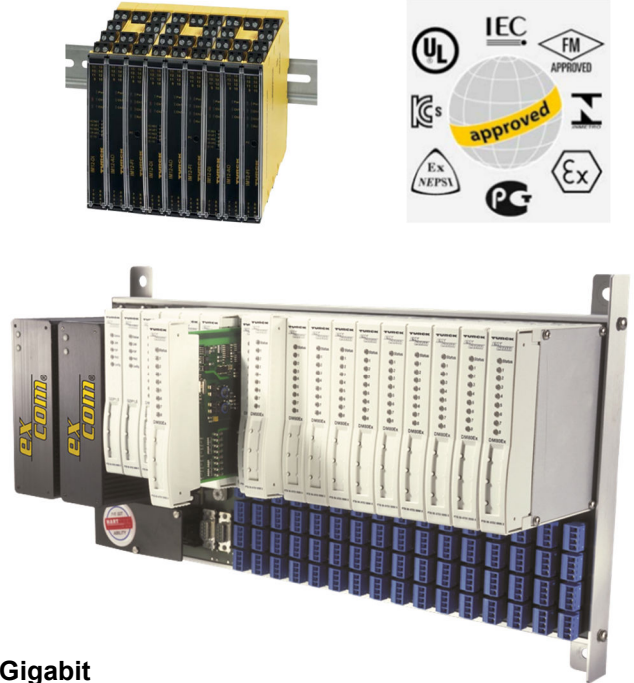
## Fieldbus

[www.turck.us/en/productgroup/Fieldbus%20Technology](http://www.turck.us/en/productgroup/Fieldbus%20Technology)

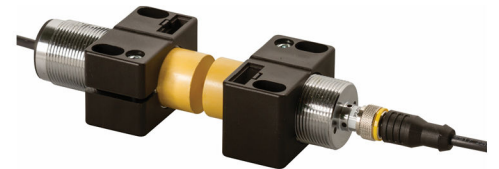
RFID



Intrinsic Safety



IP69K Gigabit Ethernet Switch



Inductive Coupler



IP20, IP67, IP69K I/O

EtherNet/IP



EtherCAT



Devicenet



TX Series HMI/PLC

# TURCK

## Sensors

[www.turck.us/en/productgroup/Sensors](http://www.turck.us/en/productgroup/Sensors)

### Industrial Sensing



### Angular Position



### Level, Pressure, Flow, Temperature



### Rotary & Linear Position Feedback

